



Smart Material Handling Solutions for Modern Industries

Optimized Handling for Modern Industries





About Company

Mecwin is a leading provider of sophisticated energy and motion solutions, including solar pumps, MPPT controllers, PMSM motors, fluid pumps, and electric vehicle motors, tailored for critical applications in the medical, defence, and aerospace sectors. With a strong emphasis on innovation, design, development, and manufacturing, we deliver high-performance, reliable technologies that optimize energy systems and industrial operations while advancing sustainable development. Serving the renewable energy, automation, agriculture, and industrial sectors, Mecwin consistently sets benchmarks in efficiency, reliability, and technological excellence, empowering industries worldwide to achieve exceptional performance and long-term growth.

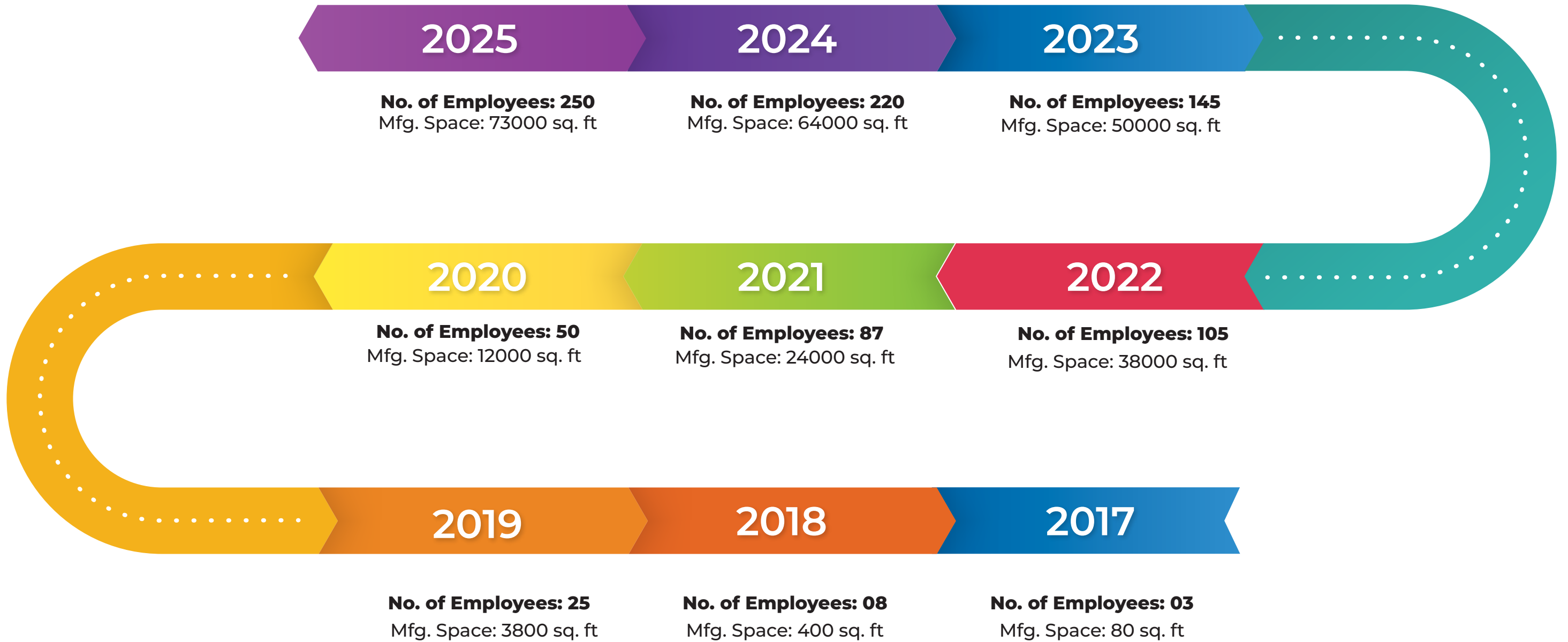
Our Vision

At Mecwin Technologies, we stand at the threshold of a profound mission—one that transcends mere corporate ambitions and resonates with the very essence of our existence. “Innovating for a Greener World: Unleashing Sustainable Possibilities” is not just a statement; it is a resounding call to action, a promise to the planet, and an unwavering commitment to the future.

Our Mission

At Mecwin Technologies, our mission is to lead the way in transforming our world into a greener, more sustainable place. We are dedicated to innovating and delivering solutions that not only meet the needs of today but also preserve the planet for future generations. In addition, we design, develop, and manufacture motors and actuators for aerospace and defence applications, focusing on indigenization to support self-reliance and cutting-edge technology.

Milestone



Why Choose Mecwin ?



End-to-End Capability

Comprehensive in-house design and manufacturing of BLDC, PMSM, and special-purpose motors, paired with advanced controllers and smart IoT-enabled platforms



Diverse Product Portfolio

Mid-drive motors, hub motors, high-power controllers, traction motors, and solar pump drive solutions



Make in India Advantage

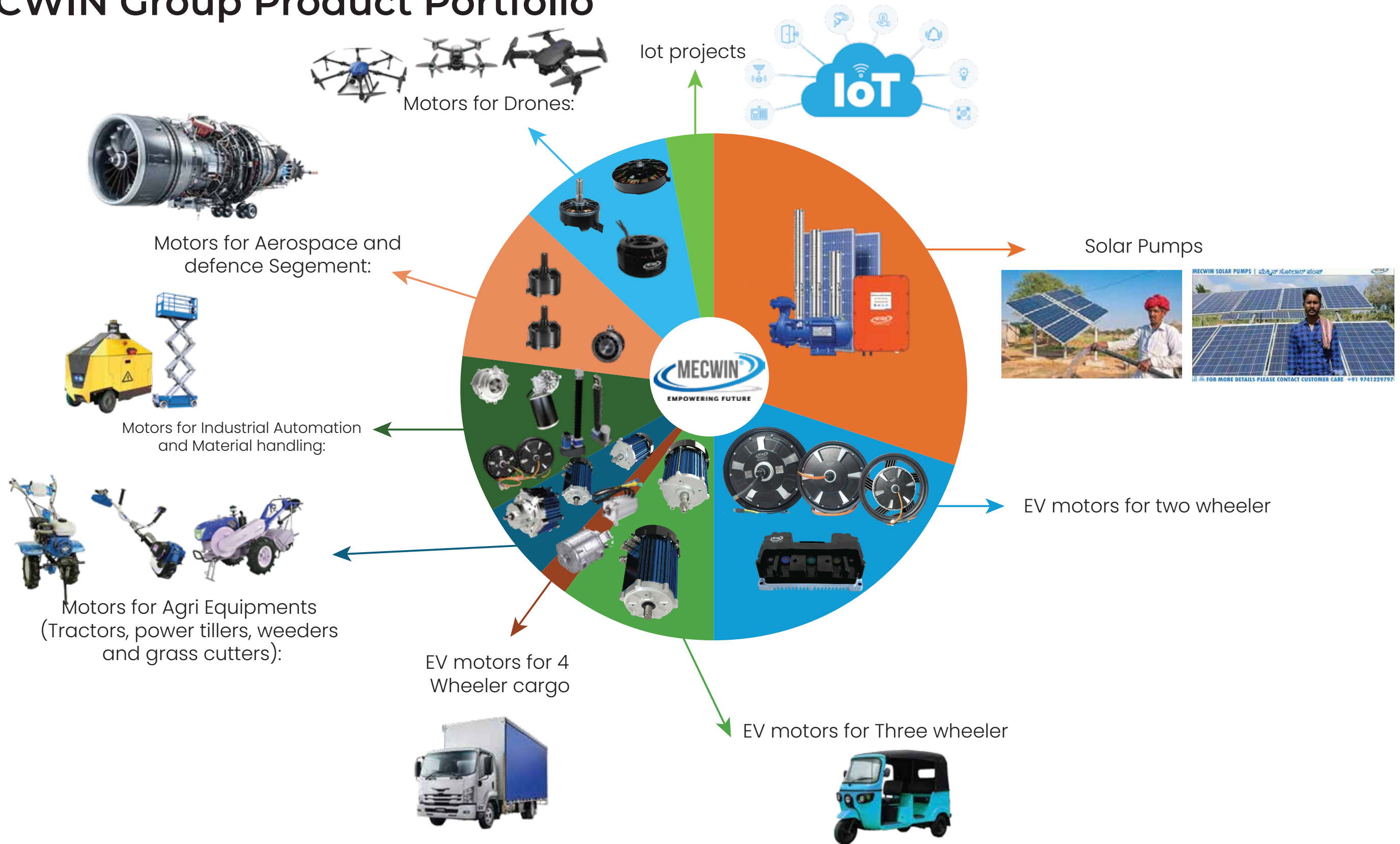
Fully localized production with deep expertise in motor design, power electronics, and system integration, reducing reliance on imports



Strong Talent Pool

Experienced team of engineers and technologists with domain knowledge in automotive, powertrain, defence, medical, industrial and renewable energy systems.

MECWIN Group Product Portfolio



Our Core Areas of Expertise

At Mecwin, we specialize in providing advanced, reliable, and high-performance solutions across a wide range of industries. Our expertise combines precision engineering, robust automation, and innovative material handling technologies to enhance productivity, streamline operations, and ensure consistent quality. We cater to diverse sectors, delivering tailored solutions that meet industry-specific requirements.



Packaging Industry



Material Handling



Machine Tool Industry



Pharmaceutical Industry



Textile Industry

Packaging Industry

The packaging industry demands high-speed, accurate, and reliable automation for filling, sealing, labeling, and final dispatch. Motors and servo systems enable consistent quality and efficient production.

Key Applications :

- **Filling & Dosing:** Servo motors ensure accurate and consistent product dosing, minimizing waste and maintaining batch consistency.
- **Sealing & Wrapping:** Motors drive heat sealing, shrink wrapping, and flow wrapping machines for secure and precise packaging.
- **Labeling:** Motor-driven labeling heads apply labels with high speed and accuracy on bottles, cartons, and pouches.
- **Forming & Cutting:** Motors operate cutting blades and formers to trim film or plastic sheets to exact sizes, saving material.
- **Cartoning & Case Packing:** Servo-driven systems provide precise motion for erecting, filling, and closing boxes and cases.
- **Conveying & Inspection:** Motors power conveyors for smooth product movement and enable precise positioning for quality inspection.



Material Handling

Material handling systems depend on reliable motor-driven mechanisms to move, lift, store, sort, and distribute products across facilities. From warehouses to manufacturing plants, motors ensure operational efficiency and safety.

Key Applications :

- **Conveyor Systems:** Motor-driven belt, roller, and chain conveyors with VFD-based speed controls.
- **Lifting Equipment:** Motors power forklifts, cranes, hoists, and stackers for heavy-load lifting.
- **AGVs & AMRs:** Motors provide driving power for automated and mobile robotic systems.
- **ASRS Systems:** Motors control lift modules, shuttles, and carousels for automated storage and retrieval.
- **Sorting Systems:** Used in tilt-tray, cross-belt, and high-speed sorting lines for parcel and product distribution.
- **Specialized Systems:** Drives for bucket elevators, bucket wheels, automated car parking systems, etc.



Pharmaceutical Industry

Pharmaceutical environments demand hygienic, precise, and contamination-free handling of materials. Motors support liquid processing, blending, drying, coating, and quality testing equipment.

Key Applications :

- **Fluid Handling:** Driving pumps for liquid transfer, dosing, and dispensing.
- **Mixing & Blending:** Powering agitators, blenders, and homogenizers.
- **Drying & Sterilization:** Motors drive autoclaves, sterilizers, and drying ovens.
- **Particle Reduction & Coating:** Used in mills, grinders, and tablet/capsule coating systems.
- **Quality Control:** Motors support laboratory instruments like dissolution testers and particle size analyzers.



Machine Tool Industry

Machine tool operations require motors that deliver high speed, accuracy, and torque to support machining, automation, and high-load movement.

Key Applications :

- **CNC Machines:** BLDC motors ensure precise spindle and axis motion for tight tolerances.
- **Robotics:** Motors power robotic arms for welding, assembly, pick-and-place, and painting.
- **Laser Cutting Machines:** BLDC motors provide smooth, precise motion for high-quality cuts.
- **Conveyor Systems:** Used in automated manufacturing setups for continuous part movement.
- **Automated Systems:** Integrated into various automation modules for high-efficiency control.



Textile Industry

The textile industry relies heavily on motors for speed control, tension management, precise fabric handling, and synchronized operations across spinning, weaving, knitting, dyeing, and printing.

Key Applications :

- **Spinning & Yarn Preparation:** Motors drive spindles, tension control units, bobbin winders, and lubrication systems.
- **Printing & Dyeing:** Motors regulate pump speeds in dyeing machines and maintain precision on screen rollers in printing.
- **Knitting:** Powering main drives and stitch/needle adjustments in flat knitting machines.
- **Weaving:** Used in loom mechanisms for consistent fabric output.
- **Thread Traversing:** Motor-driven traversing units in texturizing machines for precise forward, reverse, and lock control.
- **Spinning & Winding (PMSM):** PMSMs ensure uniform speed and tension for yarn formation and winding.
- **Dyeing & Printing (PMSM):** PMSMs maintain pump speed and roller synchronization for high-quality finishes.
- **General Machinery:** Compact PMSM motors support diverse textile machinery with high torque and efficiency.



Actuators



| Electric Linear Actuator | |
|--------------------------|----------------------------|
| Specification | Value |
| Voltage | 12V / 24V DC |
| Power Output | 50 W |
| Continuous Current | 3A |
| Max Load / Force | 2500N |
| Speed Range | 5-100 mm/s |
| Stroke Length | 20-1000 mm (Customizable) |
| Motor Type | Brush DC, Permanent Magnet |
| Rated RPM | 4000 RPM |
| Duty Cycle | 10% |
| IP Rating | IP67 (Waterproof) |
| End Limit | Built-in Limit Switches |
| Feedback Option | No Feedback / Hall Sensor |
| Mounting | Flange Mount |
| Frame Size | 32 mm |



| Electric Linear Actuator | |
|--------------------------|--------------------------------|
| Specification | Value |
| Voltage | DC 12V / 24V |
| Power Output | 100 W |
| Continuous Current | 5.5A / 20A |
| Max Load / Force | 12,000N |
| Speed Range | 6.5-38 mm/s |
| Stroke Length | 20-1000 mm |
| Motor Type | Brush DC, Permanent Magnet |
| Rated RPM | Not Specified (Gear Motor) |
| Duty Cycle | 10% (Max 2 min ON, 18 min OFF) |
| IP Rating | IP65 (Waterproof) |
| End Limit | Built-in Limit Switches |
| Feedback Option | Not Available / Not Specified |
| Mounting | Flange Mount |
| Frame Size | 32 mm |



| 3 Stages Telescopic Linear Actuator | |
|-------------------------------------|--|
| Specification | Value |
| Voltage | DC 12V / 24V |
| Power Output | 50 W |
| Continuous Current | Custom (Not specified) |
| Max Load / Force | 750-2000N (75-200 kg / 165-440 lbs) |
| Speed Range | 5-42 mm/s (0.2"-1.68"/s) |
| Stroke Length | 20-1000 mm (0.8"-40") |
| Motor Type | Brush DC, Permanent Magnet (Gear Motor) |
| Rated RPM | Custom (Not specified) |
| Duty Cycle | 25% (Max 2 min ON, 18 min rest) |
| IP Rating | IP43 / IP54 / IP65 (Customizable) |
| End Limit | Built-in Limit Switch |
| Feedback Option | Limit Switch / Hall Effect (Hall Sensor) |
| Mounting | Flange Mount |
| Frame Size | 32 mm |



| Heavy Duty Electric Linear Actuator | |
|-------------------------------------|----------------------------------|
| Specification | Value |
| Voltage | DC 12V / 24V |
| Power Output | 50 W |
| Continuous Current | 3A |
| Max Load / Force | 1200N (120 kg) |
| Speed Range | 3-40 mm/s (Rated speed: 40 mm/s) |
| Stroke Length | 25 mm or Customized |
| Motor Type | Brush DC, Permanent Magnet |
| Rated RPM | 300 RPM |
| Duty Cycle | 10% |
| IP Rating | IP68 (Waterproof) |
| End Limit | Built-in Dual Limit Switches |
| Feedback Option | Not specified / No sensor listed |
| Mounting | Flange Mount |
| Frame Size | 32 mm |

The motor can be designed & manufactured with customized request.

Actuators



| Heavy Duty Solar Panels Linear Actuator High Torque | |
|---|----------------------------|
| Specification | Value |
| Voltage | 12V / 24V / 36V / 48V DC |
| Continuous Current | 0.9A / 6.5A |
| Max Load / Force | 24,000N |
| Speed Range | 2 mm/s |
| Stroke Length | 100–1000 mm |
| Retracted Length | Stroke + 309 mm |
| Motor Type | Brush DC, Permanent Magnet |
| Duty Cycle | 10% (2 min ON, 18 min OFF) |
| IP Rating | IP66 |
| End Limit | Built-in Limit Switch |
| Inner Tube Material | Stainless Steel |



| Hospital Medical Bed Electric Actuator | |
|--|-------------------------------------|
| Specification | Value |
| Voltage | 12V DC / 24V DC |
| Power Output | 100 W |
| Continuous Current | 4.5A / 9A |
| Max Load / Force | 6000N |
| Speed Range | 5–40 mm/s |
| Stroke Length | 20–1000 mm |
| Motor Type | Gear Motor, Brush, Permanent Magnet |
| Rated RPM | 4200 RPM |
| Duty Cycle | 25% (2 min ON / 18 min Rest) |
| IP Rating | IP66 |
| End Limit | Built-in Limit Switch |
| Feedback Option | – |
| Mounting | Panel Mount |
| Frame Size | 32 mm |



| High Quality Linear Actuator Motor | |
|------------------------------------|-------------------------------------|
| Specification | Value |
| Voltage | 12V / 24V / 36V / 48V DC |
| Power Output | 50 W |
| Continuous Current | 3A |
| Max Load / Force | 900N (≈ 90 kg / 198 lbs) |
| Speed Range | 5 mm/s or 90 mm/s (Customizable) |
| Stroke Length | 25 mm (Customizable) |
| Motor Type | Brush Motor, Permanent Magnet |
| Rated RPM | 4000 RPM |
| Duty Cycle | 10% |
| IP Rating | Waterproof |
| End Limit | Built-in Limit Switch |
| Feedback Option | Available (Signal Feedback Options) |
| Mounting | Flange Mount |
| Frame Size | 32 mm |

The motor can be designed & manufactured with customized request.

BLDC Motors

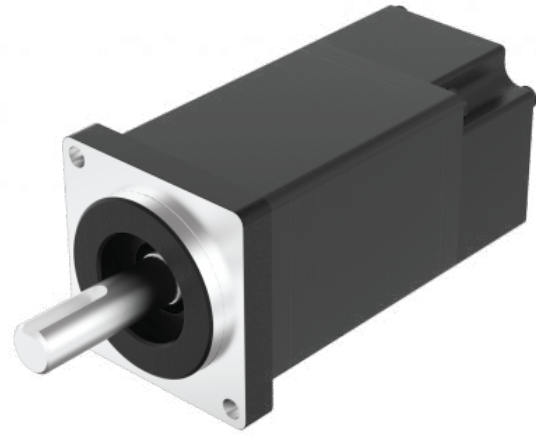


| Parameter | Model 1 | Model 2 |
|---------------------------------------|---------|---------|
| Number of poles (—) | 8 | 8 |
| Number of phases (—) | 3 | 3 |
| Rated voltage (VDC) | 24 | 24 |
| Rated torque (mN·m) | 8 | 20 |
| Continuous stall torque (mN·m) | 9.6 | 24 |
| Rated speed (RPM) | 4600 | 3800 |
| Rated power (W) | 3.8 | 8 |
| Peak torque (mN·m) | 24 | 60 |
| Peak current (A) | 1.1 | 2 |
| Line-to-line resistance (Ohms @ 20°C) | 23 | 11.6 |
| Line-to-line inductance (mH) | 6.2 | 4.3 |
| Torque constant (mN·m/A) | 29.7 | 35.8 |
| Back EMF (Vrms/KRPM) | 2.2 | 2.65 |
| Rotor inertia (g·cm ²) | 0.66 | 1.32 |
| Motor length – L (mm) | 45 | 68 |
| Weight (kg) | 0.07 | 0.12 |

| Parameter | Model 1 | Model 2 | Model 3 |
|---------------------------------------|---------|---------|---------|
| Number of poles (—) | 4 | 4 | 4 |
| Number of phases (—) | 3 | 3 | 3 |
| Rated voltage (VDC) | 15 | 24 | 24 |
| Rated torque (mN·m) | 5 | 14 | 50 |
| Continuous stall torque (mN·m) | 6 | 17 | 60 |
| Rated speed (RPM) | 8000 | 10000 | 4000 |
| Rated power (W) | 4 | 15 | 21 |
| Peak torque (mN·m) | 15 | 42 | 150 |
| Peak current (A) | 1.1 | 2.5 | 4.1 |
| Line-to-line resistance (Ohms @ 20°C) | 8.2 | 4.2 | 4.2 |
| Line-to-line inductance (mH) | 2.3 | 1.69 | 2.3 |
| Torque constant (mN·m/A) | 14.3 | 16.9 | 37.4 |
| Back EMF (Vrms/KRPM) | 1.06 | 1.25 | 2.77 |
| Rotor inertia (g·cm ²) | 2.35 | 3.69 | 10.98 |
| Motor length – L (mm) | 28 | 38 | 77 |
| Weight (kg) | 0.06 | 0.082 | 0.28 |

| Parameter | Model 1 |
|--------------------------------------|---------------|
| Number of poles (—) | 14 / 14 |
| Number of phases (—) | 3 |
| Rated voltage (VDC) | 12 / 24 |
| Rated torque (mN·m) | 43.3 / 52.8 |
| Continuous stall torque (mN·m) | 52 / 63 |
| Rated speed (RPM) | 9660 / 10300 |
| Rated power (W) | 44 / 57 |
| Peak torque (mN·m) | 120 / 158 |
| Peak current (A) | 13.4 / 9.35 |
| Line-to-line resistance (Ohms @20°C) | 0.227 / 0.501 |
| Line-to-line inductance (mH) | 0.109 / 0.39 |
| Torque constant (Nm/A) | 8.95 / 16.9 |
| Back EMF (Vrms/KRPM) | 0.66 / 1.25 |
| Rotor inertia (g·cm ²) | 10.5 / 10.5 |
| Motor length – L (mm) | 26 / 26 |
| Weight (kg) | 0.17 / 0.17 |

BLDC Motors



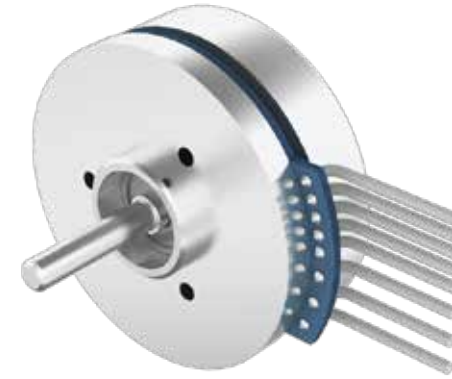
| Parameter | Models |
|--|---------------|
| Rated power (W) | 50 / 100 |
| Rated voltage (VAC/VDC) | 220 / 48 |
| Rated speed (rpm) | 3000 / 3000 |
| Rated torque (N·m) | 0.16 / 0.16 |
| Rated current (Arms) | 0.2 / 1.3 |
| Peak torque (N·m) | 0.48 / 0.48 |
| Peak current (Arms) | 0.6 / 3.9 |
| Line-to-line resistance (Ohm) | 248 / 5.8 |
| Line-to-line inductance (mH) | 160 / 3.8 |
| Back EMF constant (V/KRPM) | 54.5 / 8.5 |
| Torque constant (N·m/A) | 0.80 / 0.123 |
| Rotor inertia (kg·cm ²) | 0.024 / 0.024 |
| Rotor inertia with brake (kg·cm ²) | 0.034 / 0.034 |
| Number of poles (—) | 10 |
| Motor length L1 (mm) | 72 / 88 |
| Motor length with brake L2 (mm) | 106 / 122 |
| Weight (kg) | 0.4 / 0.5 |
| Weight with brake (kg) | 0.65 / 0.75 |

| Parameter | Models |
|--|--------------|
| Rated power (W) | 200 / 400 |
| Rated voltage (VDC) | 48 / 220 |
| Rated speed (RPM) | 3000 / 3000 |
| Rated torque (N·m) | 0.64 / 1.27 |
| Rated current (A) | 6 / 1.2 |
| Peak torque (N·m) | 1.92 / 3.81 |
| Peak current (A) | 18 / 3.6 |
| Line-to-line resistance (Ω) | 0.38 / 9.35 |
| Line-to-line inductance (mH) | 0.68 / 17 |
| Back EMF (V/KRPM) | 6.5 / 32 |
| Torque constant (Nm/A) | 0.107 / 0.53 |
| Rotor inertia Jm0 (kg·cm ²) | 0.15 / 0.25 |
| Rotor inertia with brake Jm1 (kg·cm ²) | 0.15 / 0.25 |
| Number of poles (—) | 8 |
| Motor length L1 (mm) | 86.5 / 79.5 |
| Motor length with brake L2 (mm) | 123 / 116 |
| Weight (kg) | 0.95 / 0.9 |
| Weight with brake (kg) | 1.35 / 1.3 |

| Parameter | Models |
|-------------------------------------|---------------|
| Number of poles (—) | 10 |
| Number of phases (—) | 3 |
| Rated voltage (VDC) | 310 / 48 |
| Rated torque (N·m) | 2.39 / 2.39 |
| Continuous stall torque (N·m) | 2.86 / 2.86 |
| Rated speed (RPM) | 3000 / 3000 |
| Rated power (W) | 750 / 1000 |
| Peak torque (N·m) | 7.14 / 9.6 |
| Peak current (A) | 13.2 / 73.5 |
| Line-to-line resistance (Ω @20°C) | 4.09 / 0.089 |
| Line-to-line inductance (mH) | 12.6 / 0.275 |
| Torque constant (N·m/A) | 0.736 / 0.115 |
| Back EMF (Vrms/KRPM) | 54.5 / 8.5 |
| Rotor inertia (kg·cm ²) | 1.56 / 2.22 |
| Motor length L (mm) | 112 / 118 |
| Weight (kg) | 1.56 / 2.22 |

| Parameter | Models |
|--|--------------|
| Rated Power (W) | 2000 / 3000 |
| Rated Voltage (VAC/VDC) | 220 / 48 |
| Rated Speed (RPM) | 2000 / 2000 |
| Rated Torque (N·m) | 9.55 / 14.3 |
| Rated Current (Arms) | 7.8 / 52.9 |
| Peak Torque (N·m) | 28.65 / 42.9 |
| Peak Current (Arms) | 23.4 / 158.7 |
| Line-to-Line Resistance (Ω) | 1.4 / 0.03 |
| Line-to-Line Inductance (mH) | 6.8 / 0.14 |
| Back EMF Constant (V/KRPM) | 81 / 12 |
| Torque Constant (N·m/A) | 1.22 / 0.18 |
| Rotor Inertia (kg·cm ²) | 14 / 19.9 |
| Rotor Inertia with Brake (kg·cm ²) | 15.2 / 20.2 |
| Number of poles (—) | 10 |
| Motor Length L1 (mm) | 150 / 165 |
| Motor Length with Brake L2 (mm) | 178 / 193 |
| Weight (kg) | 7 / 11.7 |
| Weight with Brake (kg) | 9.5 / 14.2 |

Outer Rotor BLDC Motors



| Parameter | Models |
|---|---------------------------|
| Number of Poles (—) | 8 |
| Number of Phases (—) | 3 |
| Rated Voltage (VDC) | 9 / 12 / 24 / 48 |
| Rated Torque (mN·m) | 29.5 / 25.1 / 25.5 / 24.7 |
| Continuous Stall Torque (mN·m) | 35.4 / 30.1 / 30.6 / 29.6 |
| Rated Speed (RPM) | 2100 / 2800 / 2760 / 2950 |
| Rated Power (W) | 6 / 7 / 7 / 8 |
| Peak Torque (mN·m) | 73.8 / 75.3 / 76.5 / 74.1 |
| Peak Current (A) | 3.4 / 3.2 / 1.7 / 0.97 |
| Line-to-Line Resistance (Ω @20°C) | 2.87 / 3.43 / 13.7 / 53 |
| Line-to-Line Inductance (mH) | 1.61 / 1.87 / 7.73 / 27.8 |
| Torque Constant (mN·m/A) | 23 / 24.8 / 51 / 96.1 |
| Back EMF (Vrms/KRPM) | 1.7 / 1.83 / 3.77 / 7.1 |
| Rotor Inertia (g·cm ²) | 35 |
| Motor Length (mm) | 18 |
| Weight (g) | 50 |

| Parameter | Models |
|---|--------------------|
| Number of Poles (—) | 16 |
| Number of Phases (—) | 3 |
| Rated Voltage (VDC) | 24 |
| Rated Torque (mN·m) | 50 / 84 / 130 |
| Continuous Stall Torque (mN·m) | 60 / 100 / 156 |
| Rated Speed (RPM) | 5000 / 5260 / 4840 |
| Rated Power (W) | 30 / 50 / 70 |
| Peak Torque (mN·m) | 150 / 250 / 390 |
| Peak Current (A) | 4.3 / 7.4 / 11 |
| Line-to-Line Resistance (Ω @20°C) | 1.42 / 0.72 / 0.56 |
| Line-to-Line Inductance (mH) | 0.59 / 0.33 / 0.27 |
| Torque Constant (mN·m/A) | 35.2 / 34.4 / 37.1 |
| Back EMF (Vrms/KRPM) | 2.61 / 2.55 / 2.75 |
| Rotor Inertia (g·cm ²) | 100 / 135 / 180 |
| Motor Length (mm) | 18 / 21.6 / 27 |
| Weight (kg) | 0.08 / 0.12 / 0.15 |

| Parameter | Models |
|---|--------|
| Number of Poles (—) | 14 |
| Number of Phases (—) | 3 |
| Rated Voltage (VDC) | 24 |
| Rated Torque (mN·m) | 112 |
| Continuous Stall Torque (mN·m) | 135 |
| Rated Speed (RPM) | 4400 |
| Rated Power (W) | 50 |
| Peak Torque (mN·m) | 336 |
| Peak Current (A) | 9 |
| Line-to-Line Resistance (Ω @20°C) | 0.75 |
| Line-to-Line Inductance (mH) | 0.42 |
| Torque Constant (mN·m/A) | 37 |
| Back EMF (Vrms/KRPM) | 3.1 |
| Rotor Inertia (g·cm ²) | 135 |
| Motor Length (mm) | 21.5 |
| Weight (kg) | 0.13 |

| Parameter | Models |
|---|--------|
| Number of Poles (—) | 22 |
| Number of Phases (—) | 3 |
| Rated Voltage (VDC) | 48 |
| Rated Torque (mN·m) | 964 |
| Continuous Stall Torque (mN·m) | 1156 |
| Rated Speed (RPM) | 1670 |
| Rated Power (W) | 169 |
| Peak Torque (mN·m) | 3000 |
| Peak Current (A) | 13 |
| Line-to-Line Resistance (Ω @20°C) | 0.64 |
| Line-to-Line Inductance (mH) | 0.65 |
| Torque Constant (mN·m/A) | 230 |
| Back EMF (Vrms/KRPM) | 17.7 |
| Rotor Inertia (g·cm ²) | 5000 |
| Motor Length (mm) | 41.5 |
| Weight (kg) | 1.1 |

Material Handling Motors



| Parameter | Specification |
|------------------------|---------------|
| Material | Polyurethane |
| Load Capacity | 1000 kg |
| Motor Rated Power | 1.5 kW |
| Battery Voltage | 24 V |
| Wheel Size | 250 × 80 mm |
| Speed Ratio | 1:32 |
| Brake Torque | 8 N·m |
| Maximum Turning Radius | 176 mm |
| Motor Current | 40 A |

| Parameter | Specification |
|-----------------|---------------------------------------|
| Type | Hub Motor with Gearbox |
| Rated Power | 1.5 – 3 kW (customizable) |
| Rated Voltage | 24 V / 48 V DC |
| Rated Speed | 2000 – 3000 RPM |
| Rated Torque | 50 – 150 N·m |
| Peak Torque | 150 – 400 N·m |
| Peak Current | 40 – 90 A |
| Number of Poles | 8 – 16 |
| Motor Phases | 3 |
| Gear Reduction | 1:32 |
| Weight | 0.5 – 2 kg |
| Tread Material | PU Polyurethane (if wheel integrated) |

| Parameter | Value |
|------------------------------|------------------------------------|
| Rated power (continuous) | 3.0 kW |
| Rated speed | 2,500 RPM |
| Rated torque (user) | 12.0 N·m |
| Angular speed (ω) | 261.7993878 rad/s |
| Mechanical power at 12 N·m | 3,141.5927 W (\approx 3.142 kW) |
| Continuous torque for 3.0 kW | 11.4592 N·m |
| Tipping load (mass) | 5,000 kg |
| Tipping load (force) | 49,033.25 N |
| Assumed motor efficiency | 90% |
| Electrical input power | 3,333.33 W |

| Parameter | Value |
|------------------------------|----------------------------------|
| Rated power (continuous) | 1.2 kW |
| Rated speed | 2,500 RPM |
| Rated torque (user range) | 4 – 6 N·m |
| Angular speed (ω) | 261.7993878 rad/s |
| Mechanical power @ 4 N·m | 1,047.20 W (\approx 1.047 kW) |
| Mechanical power @ 6 N·m | 1,570.80 W (\approx 1.571 kW) |
| Continuous torque for 1.2 kW | 4.5837 N·m |
| Tipping load (mass) | 2,000 kg |
| Tipping load (force) | 19,613.30 N |

Special Purpose Motors



| Parameter | Specification |
|-------------------|---------------|
| Temperature Range | -15° – 60° C |
| Max Efficiency | 80% |
| Speed | 150 rpm |
| Torque | 90 Nm |
| Output Power | 1.2 kW |
| Max AC Current | 5:00 AM |
| DC Voltage | 415 V |
| Motor Type | PMSM |
| Description | Particular |

| Parameter | Specification |
|-------------------|---------------|
| Temperature Range | -15° – 60° C |
| Max Efficiency | 90% |
| Speed | 1500 rpm |
| Torque | 9 Nm |
| Output Power | 1.2 kW |
| Max AC Current | 5:00 AM |
| DC Voltage | 380 V |
| Motor Type | PMSM |
| Description | Particular |

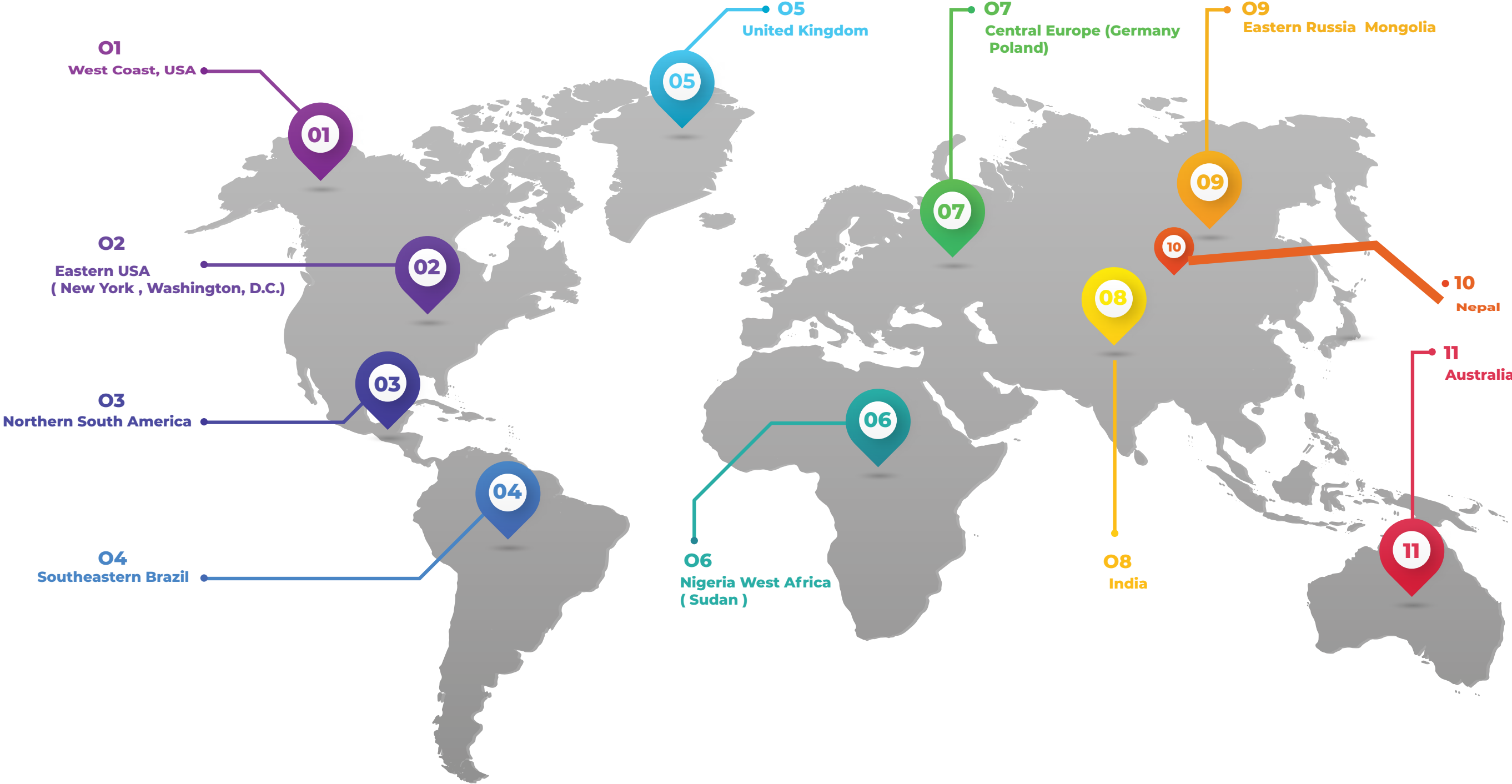
A Network of Service & Support



Our Service & Support team
are directly accessible in Pan India



MECWIN Global Customers





Mecwin Technologies India Pvt.Ltd.

65/3-1, MEC Road, Industrial Suburb, Yeswanthpur,
Bengaluru, Karnataka – 560022, India

Customer Care: +91 96066 07409

Email: sales@mecwinindia.com

Website: www.mecwinindia.com

Follow Us On

